



- | | |
|-------------------|------------------|
| 1. Deep Sea Blue | 13. Irish Eyes |
| 2. Flame Tree | 14. Crimson |
| 3. Cerulean Lake | 15. Rosewood |
| 4. Pale Cobalt | 16. Stallion |
| 5. Blue Spruce | 17. Chestnut |
| 6. Alpine Stream | 18. Mahogany |
| 7. White | 19. Beechwood |
| 8. Ripe Lemon | 20. Crimson |
| 9. Dusty Pink | 21. Burgundy Red |
| 10. Scarlet Pomp | 22. Cheapside |
| 11. Burnt Crimson | 23. Rosy Lead |
| 12. Flesh | 24. Steely Teal |

Ce343_001qb.art

117.90x128.30 mm; 34,061 stitches
24 thread changes; 23 colors



- | | |
|--------------------|---------------------|
| 1. Deep Sea Blue | 10. Kilkenny |
| 2. Flesh | 11. White |
| 3. Beach Blue | 12. Ripe Lemon |
| 4. Autumn Sapphire | 13. Copper Salmon |
| 5. Calm Blue | 14. Pinkish Mauve |
| 6. Tropical Blue | 15. Crimson Berry |
| 7. Bright Citrus | 16. Cloudy Tan |
| 8. Lucen Green | 17. Deep Sea Blue |
| 9. Flame Tree | 18. Autumn Sapphire |

Ce343_002qb.art

124.60x128.00 mm; 29,303 stitches
18 thread changes; 16 colors



- | | |
|-------------------|-------------------|
| 1. Deep Sea Blue | 12. Sage Cream |
| 2. Pinkish Mauve | 13. White |
| 3. Copper Salmon | 14. Beach Blue |
| 4. Flesh | 15. Cerulean Lake |
| 5. Crimson | 16. Dark Ginger |
| 6. Crimson Rose | 17. Lucen Green |
| 7. Bright Citrus | 18. Crimson Berry |
| 8. Ripe Lemon | 19. Cloudy Tan |
| 9. Noon Sun | 20. Cobalt Gray |
| 10. Lavender Blue | 21. Deep Sea Blue |
| 11. Cloudy Hue | 22. Bluish Soot |

Ce343_003qb.art

124.90x127.80 mm; 34,579 stitches
22 thread changes; 21 colors



- | | |
|------------------|-------------------|
| 1. Deep Sea Blue | 10. Green Ice |
| 2. Flesh | 11. Dairy Farm |
| 3. Lavender Blue | 12. Cobalt Gray |
| 4. Flame Tree | 13. Wheaten Green |
| 5. Flesh | 14. White |
| 6. Beechwood | 15. Cloudy Tan |
| 7. Stallion | 16. Rosy Lead |
| 8. Lucen Green | 17. Leaden Blue |
| 9. Bright Citrus | |

Ce343_004qb.art

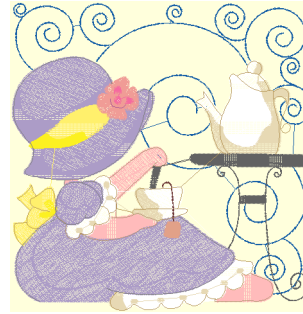
118.50x128.60 mm; 27,518 stitches
17 thread changes; 16 colors



- | | |
|-------------------|-------------------|
| 1. Burnt Orange | 12. Bright Citrus |
| 2. Crimson | 13. Lucen Green |
| 3. Rosy Lead | 14. Ratan Alloy |
| 4. Lunar Gray | 15. Ginger Brown |
| 5. Flesh | 16. Sanguine |
| 6. White | 17. Lucen Green |
| 7. Ripe Lemon | 18. Cheapside |
| 8. Calm Blue | 19. Estate Gray |
| 9. Blue Gravel | 20. Tinted Pewter |
| 10. Orange | 21. Lavender Blue |
| 11. Cinnamon Sand | 22. Lagoon |

Ce343_005qb.art

127.50x128.30 mm; 25,354 stitches
22 thread changes; 22 colors



- | | |
|------------------|-----------------|
| 1. Deep Sea Blue | 10. Image Color |
| 2. Image Color | 11. Image Color |
| 3. Image Color | 12. Image Color |
| 4. Image Color | 13. Image Color |
| 5. Image Color | 14. Image Color |
| 6. Image Color | 15. Image Color |
| 7. Image Color | 16. Image Color |
| 8. Image Color | 17. Image Color |
| 9. Image Color | |

Ce343_006qb.art

125.20x128.00 mm; 27,055 stitches
17 thread changes; 17 colors



- | | |
|-------------------|--------------------|
| 1. Deep Sea Blue | 11. Dieppe |
| 2. Lucen Green | 12. Tropical Blue |
| 3. Sandy Gravel | 13. Torquoise Blue |
| 4. Noon Sun | 14. White |
| 5. Flesh | 15. Hedge |
| 6. Green Ice | 16. Crimson Berry |
| 7. Dairy Farm | 17. Cloudy Tan |
| 8. Wheaten Green | 18. Rosy Lead |
| 9. Golden Dawn | 19. Dieppe |
| 10. Pinkish Mauve | |

Ce343_007qb.art

124.30x128.30 mm; 30,178 stitches
19 thread changes; 18 colors



- | | |
|------------------|-------------------|
| 1. Deep Sea Blue | 10. Livery Green |
| 2. Copper Orb | 11. Beechwood |
| 3. Orange | 12. Stallion |
| 4. Green Ice | 13. Copper Salmon |
| 5. Dairy Farm | 14. Chestnut |
| 6. Flesh | 15. Beechwood |
| 7. White | 16. Hedge |
| 8. Wheaten Green | 17. Cloudy Tan |
| 9. Hedge | 18. Rosy Lead |

Ce343_008qb.art

120.60x128.10 mm; 31,595 stitches
18 thread changes; 18 colors



- | | |
|--------------------|-------------------|
| 1. Deep Sea Blue | 13. Lucen Green |
| 2. White | 14. Pale Creek |
| 3. Copper Salmon | 15. Saturn |
| 4. Pinkish Mauve | 16. Copper Salmon |
| 5. Bright Citrus | 17. Pinkish Mauve |
| 6. Wheaten Green | 18. Flesh |
| 7. Beach Blue | 19. Lucen Green |
| 8. Autumn Sapphire | 20. Crimson Berry |
| 9. White | 21. Cloudy Tan |
| 10. Wheaten Green | 22. Leaden Blue |
| 11. Charred Orange | 23. Rosy Lead |
| 12. Bright Citrus | |

Ce343_009qb.art

126.70x128.60 mm; 30,787 stitches
23 thread changes; 17 colors



- | |
|------------------|
| 1. Deep Sea Blue |
| 2. White |
| 3. Wheaten Green |
| 4. Flesh |
| 5. Bright Citrus |
| 6. Lucen Green |
| 7. Crimson |
| 8. Stallion |
| 9. Dusky Wood |
| 10. Lucen Green |
| 11. Cloudy Tan |
| 12. Rosy Lead |

Ce343_010qb.art

122.70x128.40 mm; 25,845 stitches
12 thread changes; 11 colors



- | | |
|------------------|-------------------|
| 1. Deep Sea Blue | 11. Chestnut |
| 2. Copper Salmon | 12. Sandy Gravel |
| 3. Pinkish Mauve | 13. Bright Citrus |
| 4. White | 14. Flesh |
| 5. Wheaten Green | 15. Lucen Green |
| 6. Cobalt Gray | 16. Crimson Berry |
| 7. Lavender Blue | 17. Cloudy Tan |
| 8. White | 18. Rosy Lead |
| 9. Stallion | 19. Deep Sea Blue |
| 10. Leather Tan | |

Ce343_011qb.art

122.80x128.20 mm; 33,153 stitches
19 thread changes; 17 colors



- | | |
|------------------|--------------------|
| 1. Deep Sea Blue | 13. Wheaten Green |
| 2. Bright Citrus | 14. Tropical Blue |
| 3. Pale Lawn | 15. Turquoise Blue |
| 4. Dairy Farm | 16. Bright Citrus |
| 5. White | 17. Sandy Gravel |
| 6. Wheaten Green | 18. White |
| 7. Light Cerise | 19. Charcoal |
| 8. Dusty Pink | 20. Crimson Copper |
| 9. Sage Cream | 21. Lucen Green |
| 10. Beechwood | 22. Rosy Lead |
| 11. Chestnut | 23. Dieppe |
| 12. Flesh | |

Ce343_012qb.art

119.20x128.20 mm; 36,627 stitches
23 thread changes; 20 colors